

Sample nonprofit profile

Summary

Quick insights help you save time by showing you essential details at a glance.

Check key facts to determine if an organization is an ideal partner.

Save hours by instantly verifying an organization's eligibility to receive tax deductible grants.

The screenshot shows a detailed profile for 'Sample Nonprofit' on the Candid platform. The profile includes a navigation menu with 'Summary', 'Programs', 'Grants', 'Impact', 'People', and 'Financials'. Key information is displayed in a grid: EIN 12-3456789, Location Philadelphia, PA, Year founded 1960, Ruling year 1964, Executive Director Elizabeth Powers, IRS subsection 501(c)(3) Public Charity, Organization type Public Charities, and Parent organization Philadelphia Nonprofit. A 'Platinum Transparency' badge is visible in the top right. The 'Mission' section states the organization's goal is to cultivate appreciation for movement through world-class performances. The 'Our focus' section lists subject areas like Human services, Arts and culture, and Environment, and geographic areas served like Brazil, Haiti, Mexico, Louisiana, Mississippi, Michigan, New Mexico, United States, and Southern Africa. The 'Financials' section shows fiscal year 2023 data: Total assets \$32,436,045, Total revenue \$21,442,341, and Total expenses \$19,109,646. The 'Programs' section shows 2 total programs and a 'Performance Excellence' award. The 'Contact' section provides address, phone, email, and website. A 'Communication' section includes social media icons and a blog link.

Discover if you share a common goal with an organization or if they need your expertise by exploring their program details.

Documents Form 990 Info

Sample Nonprofit

Platinum Transparency
Candid.

Summary Programs Grants Impact People Financials

What we aim to solve

We aim to expand our services so we can reach our community more readily and comprehensively as well as provide our community a state of the art facility and wellness center and expand our school.

Programs

Total programs

2

Performance Excellence

Sample presents nearly 60 performances of six productions each year, including its annual holiday production of *The Nutcracker*.

Subject area: Human services | Community and economic development
Population served: Adults
Geographic area served: Philadelphia

Community Engagement

Sample is changing the way people experience movement. For more than two decades, Sample has shared its love of movement with the city of Philadelphia. Each year, we work with more than 15,000 individuals from across the greater Philadelphia area by offering hands-on, high quality arts education activities in school, out of school, at the theater, in our studios, and at area parks and community centers, free of charge. Whether we are sending the talented dancers into community and senior centers, working through school-based program...
[+ More](#)

Population served: Children and youth | People with disabilities
Geographic area served: Philadelphia | Camden County | Philadelphia County

Program results

Performance Program

Number of Performances per year

Year	Number of Performances
2012	5
2013	10
2014	12
2015	18
2016	10
2017	10
2018	18
2019	22
2020	5
2021	25

Our focus

Subject area

- ☑ Human services
 - Youth development
 - Family services
 - Youth services
- ☑ Arts and culture
- ☑ Environment
- ☑ Unknown or not classified

NTEE codes

Philanthropy, Voluntarism, and Grantmaking Foundations (T31)

[Documents](#) [Form 990](#) [Info](#)

Sample Nonprofit

Platinum Transparency
Candid.

Summary
Programs
Grants
Impact
People
Financials
Related
Forms 990

Received

Bar
Table

Five year overview

Funders by type

Total funders
121

- Community foundations
- Company-sponsored foundations
- Corporate giving programs
- DAF sponsors
- Family foundations
- Independent foundations
- Operating foundations
- Other
- Public charities

Top funders

Name	Number of grants	Value of grants
Bank of America Charitable ... Charlotte, United States	23	\$105,340
California Community Foun... Los Angeles, United States	10	\$548,485
The Ahmanson Foundation Beverly Hills, United States	8	\$421,750
Charles Detoy and Henrieta ... Pasadena, United States	5	\$25,350
Henry a Yost and Cynthia Yo... South Pasadena, United States	4	\$61,500

Total funding

\$

Grant ranges

\$

Received grants

Search results for "homelessness" [Clear keywords](#) Filter

Subject area 1 X
Geographic area served 1 X
Clear filters

\$36,040,212

Total grant value

For years 2006 to 2025

Grants	1,122
Funders	223

Snapshot

Average grant size	\$32,121
Midpoint grant size	\$5,000
Most common grant size	\$5,000
Range	\$10-\$5.0M

All received grants

Sort: Fiscal Year

The Ahmanson Foundation	EIN: 95-6089998	Amount:	\$15,000
Beverly Hills, CA	501(c)(3) Private	Fiscal year:	2025

Quickly see how much funding a nonprofit has received.

See which grantmakers are funding this nonprofit and why.

Find a nonprofit that aligns with your goals by evaluating the results of an organization's work.

Dig deeper by reviewing board leadership practices, relevant SDGs, and photos/videos of a nonprofit's impact.

[Documents](#) [Form 990](#) [Info](#)

Sample Nonprofit

Platinum Transparency

Candid.

Summary
Programs
Grants
Impact
People
Financials

Goals

What is the organization aiming to accomplish?

We have 8 goals that include DEIA. Expand and Build a New Dance Center to Enable our Mission Deepen Artistic Excellence Build Brand and Reputation Shape our School as an International Leader Expand our Audience and Donor Base Create Sustainable Financial, Operational, and Organizational Excellence Deepen Community Engagement and Social Impact Strengthen Governance Structures and Processes

What are the organization's key strategies for making this happen?

We are in need of expanding our building so we can serve our community more readily and comprehensively as well as provide our dancers a state of the art facility and wellness center and expand our school.

UN Sustainable Development Goals

Results

Program results

Performance Program

Number of Performances per year

How we listen

How is your organization using feedback from the people you serve?

- To identify and remedy poor client service experiences
- To identify bright spots and enhance positive service experiences
- To make fundamental changes to our programs and/or operations
- To inform the development of new programs/projects
- To identify where we are less inclusive or equitable across demographic groups

Media

Sample Nonprofit



Summary Programs Grants Impact People Financials

Leadership

Executive director

Mr. Dave Giffen

davegiffen@sample-foundation.org [LinkedIn](#)

As Executive Director of a large private foundation, they lead efforts to drive meaningful change by aligning resources with key societal needs. With expertise in nonprofit management and social innovation, they are committed...

[+ More](#)

Chief Financial Officer

Holden Lee

Easily find and connect with key decision-makers.

Board members

Barry H. Berke

BrightSky Charities [LinkedIn](#)
Board Chair: 2023 - 2024

Terry Andreas

Luminara Foundation

Ellen Baxter

SummitPath Initiatives

David Giffen

Evernorth Collective

Richard Lewis

UnityQuest Foundation

Andrew Kramer

Veridian Trust

Marcia Sells

CoreImpact Group

Barry Berke

BrightSky Charities

Helen Lowenstein

HorizonReach Fund

Howard Furst

HarborBridge Philanthropies

Michael Friedman

GreenWave Partners

Michael Kempner

Solara Impact Fund

Amanda Moretti

InspirePath Ventures

Daniel Nardello

Nova Horizons Fund

Lucy Fato

BeaconPoint Foundation

Rich Russo

ThriveSphere

Jennifer Wallace

RadiantEdge Trust

Staff

Aleda Gagarin

Vice President of Influence

Catherine Williams

Chief Data Officer

Eva Feng

Vice President of Product Management

Kevin Mulder

Vice President of Technology

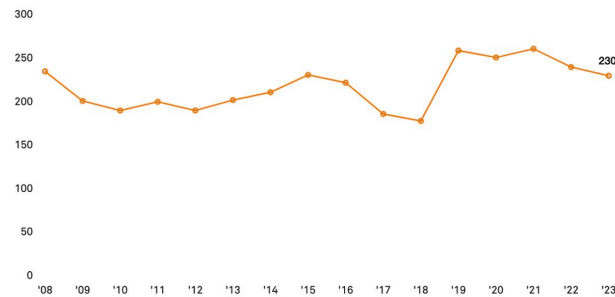
Samantha Barbee

Chief Operating & Financial Officer

Tracy Wakster

Vice President of Growth

Number of employees



Source: IRS Form 990

Contact

Primary contact

Mary Steyer
Senior Director of Communications & Brand Awareness
212-620-4230
mary.steyer@candid.org

Fundraising contact

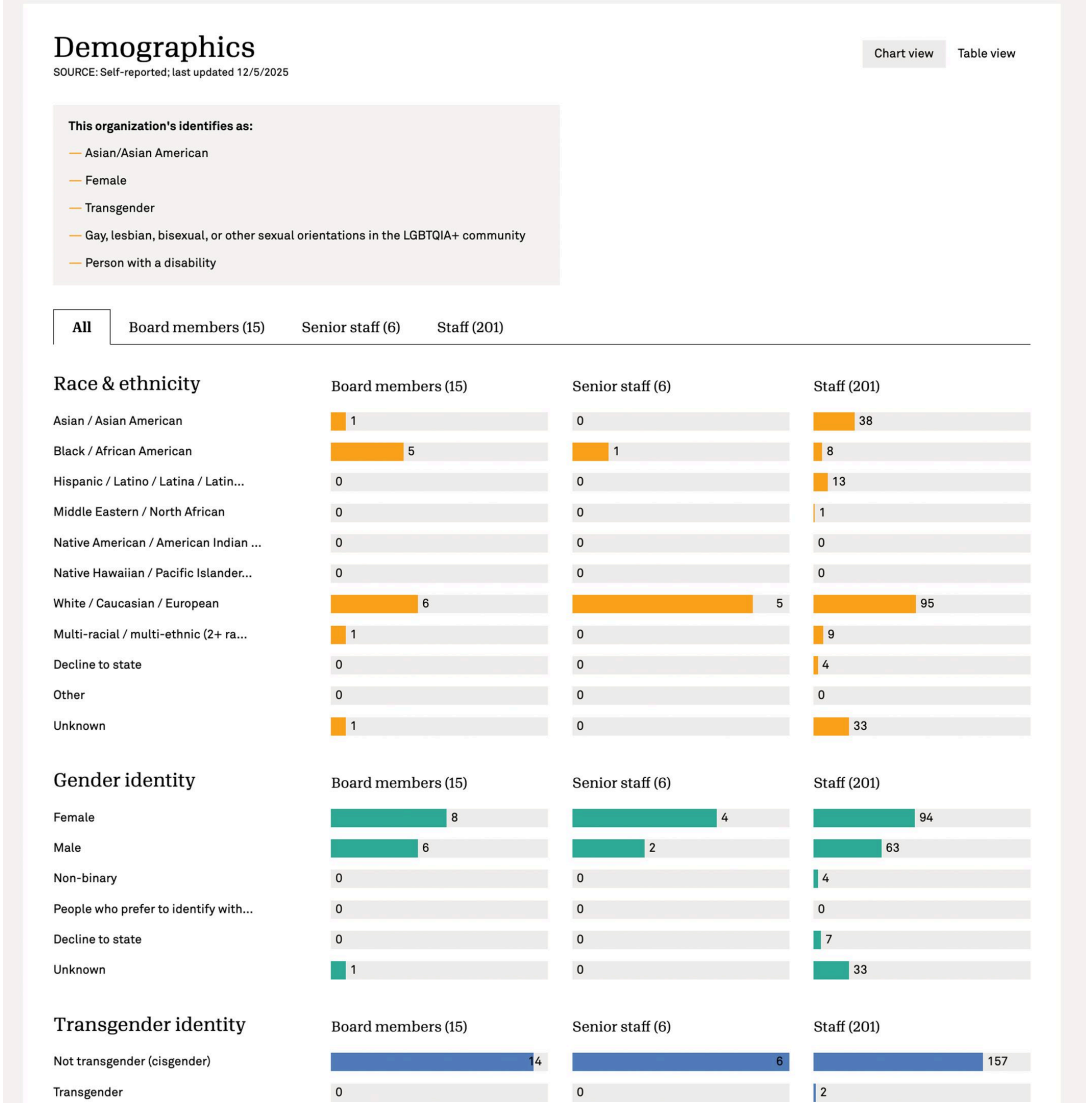
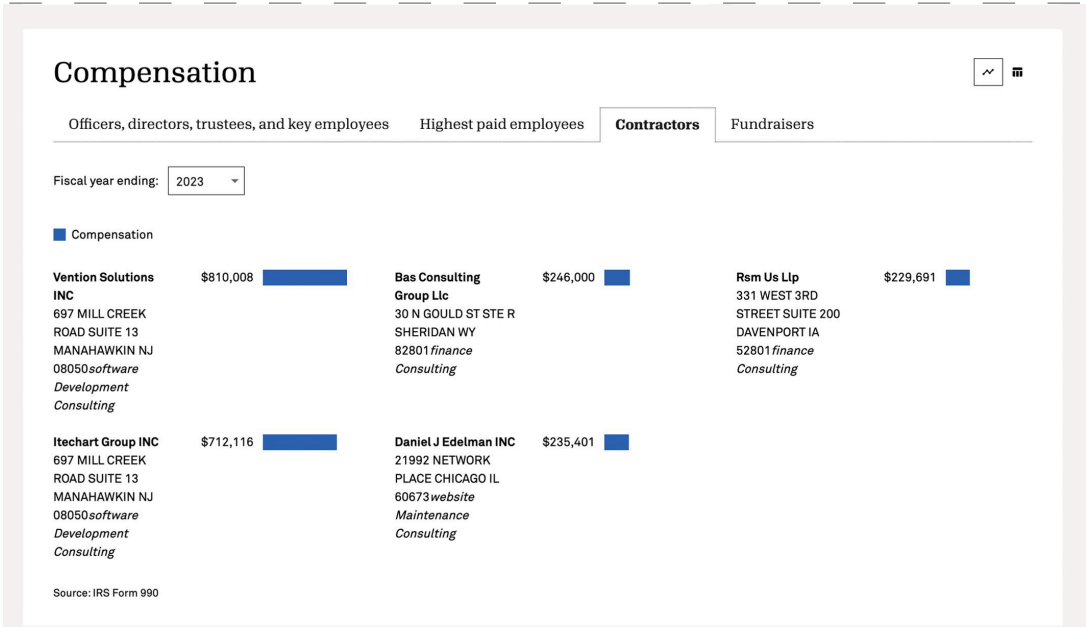
Kate Sweeney
Senior Director of Development
kate.sweeney@candid.org

People (continued)

Partners that help facilitate a nonprofit's operations.

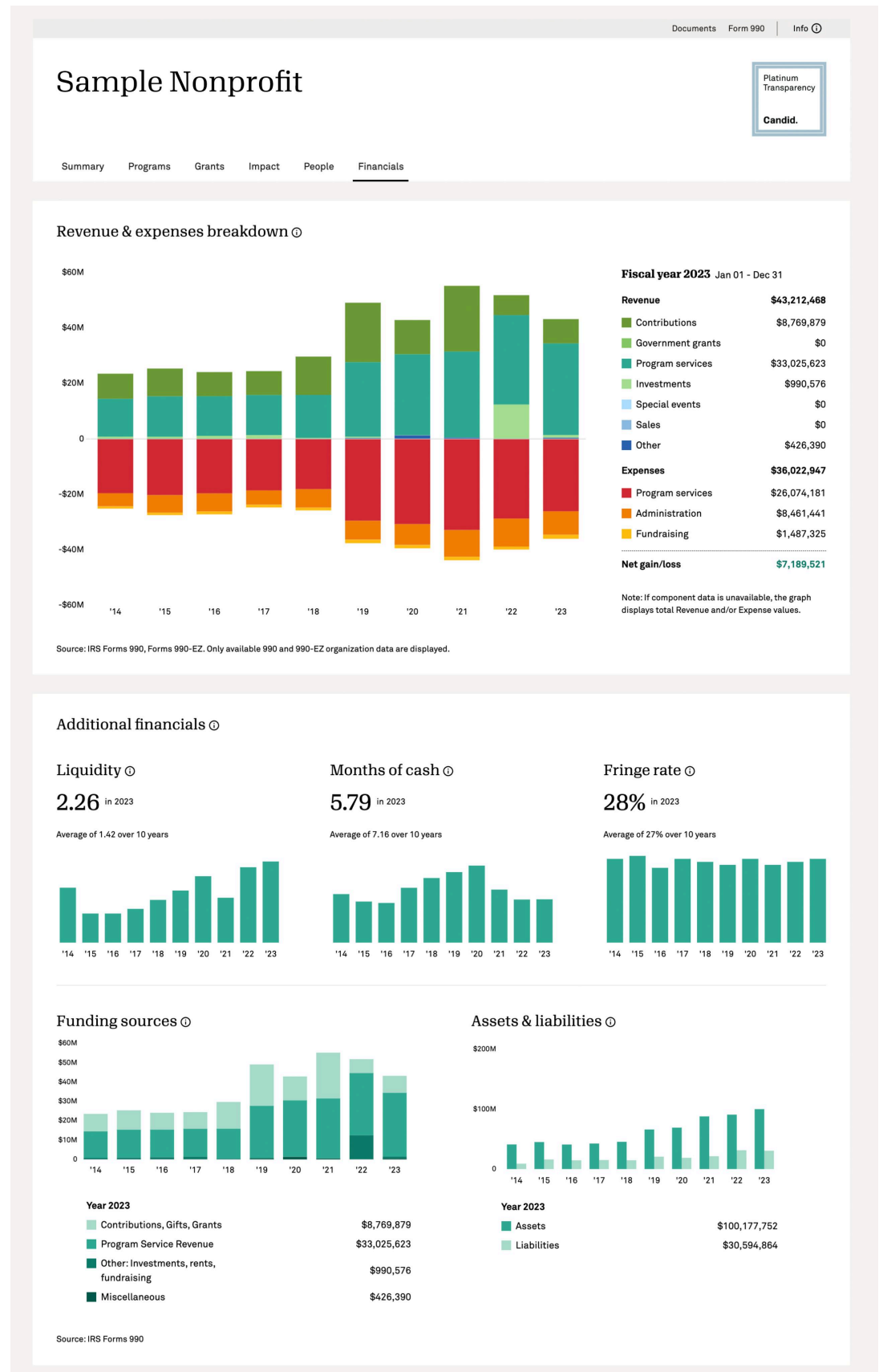
Find and support organizations that align with your equity and diversity goals.

Get essential demographics information on race & ethnicity, gender identity, transgender identity, sexual orientation, and disability.



Determine the potential of a nonprofit based on their financial viability.

Data visualizations and financial trend analysis make it easy to create forecasts and assessments.



Financials (continued)

Explore specific revenue and expense line items to find organizations who need your support or services.

Financial data

Revenue & expenses

Balance sheet

Financial trends analysis

Paid Preparer

PKF O'CONNOR DAVIES

ADVISORY LLC

EIN: 87-3231666

500 MAMARONECK AVENUE

SUITE 301

HARRISON, NY 105281633

Tel: 914-381-8900

✓ Financials were audited by an independent accountant.

Fiscal year ending: 2023

Jan 01 - Dec 31

Download

Revenue

2023

Contributions	\$8,769,879
Government grants	\$0
Program services	\$33,025,623
Investments	\$990,576
Special events	\$0
Sales	\$0
Other	\$426,390
Total revenue	\$43,212,468

Expenses

2023

Program services	\$26,074,181
Administration	\$8,461,441
Fundraising	\$1,487,325
Total expenses	\$36,022,947
NET GAIN/LOSS	+\$7,189,521

Functional expenses

2023

Accounting fees	\$53,800
Advertising & promotion	\$831,861
Information technology expenses	\$6,365,635
Insurance expenses	\$204,298
Interest expenses	\$0
Investment management fees	\$172,631
Legal fees	\$229,209
Pension plan contributions	\$1,251,605
Professional fundraising expenses	\$0

Source: IRS Forms 990, Forms 990-EZ, Forms 990-PF